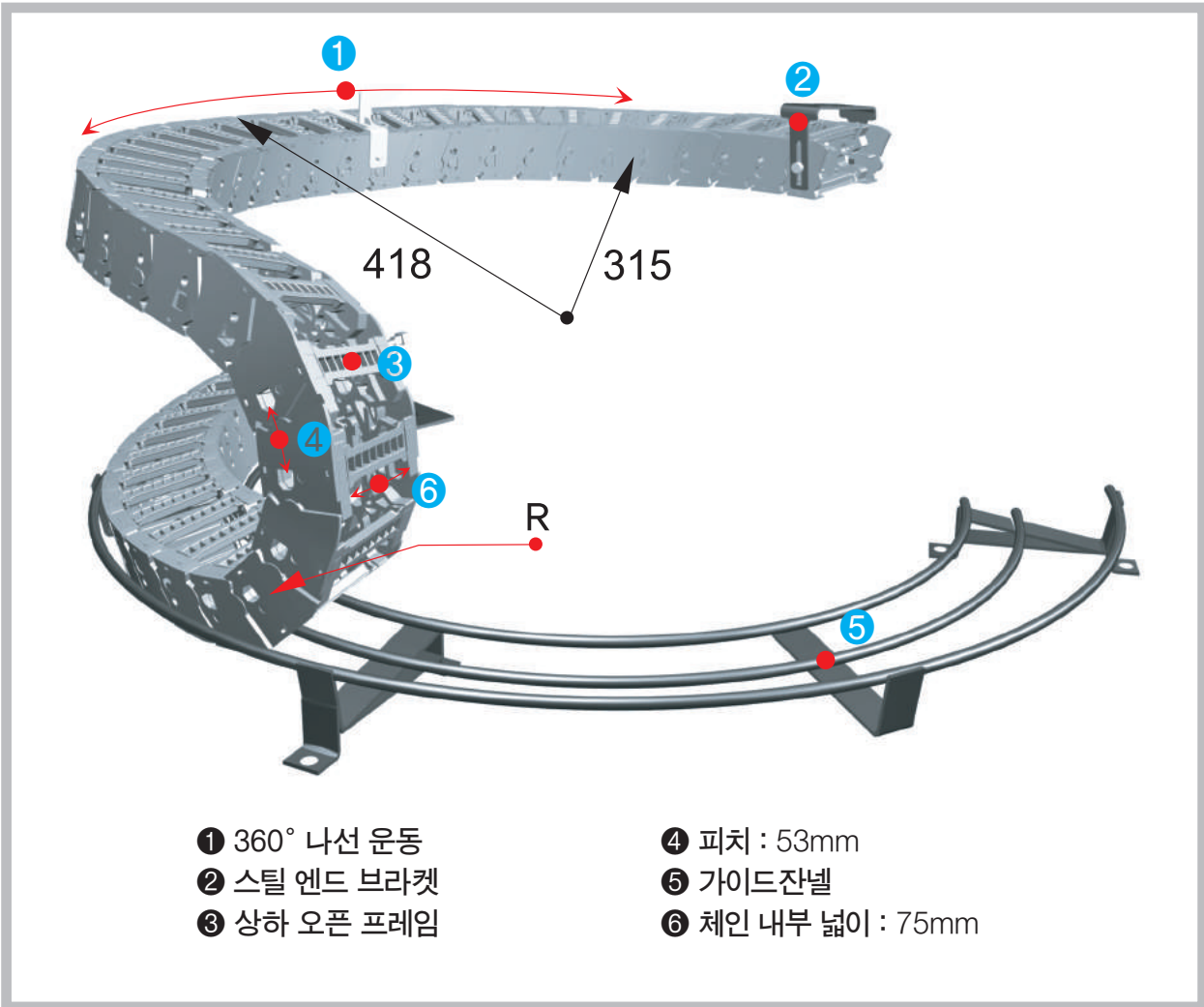


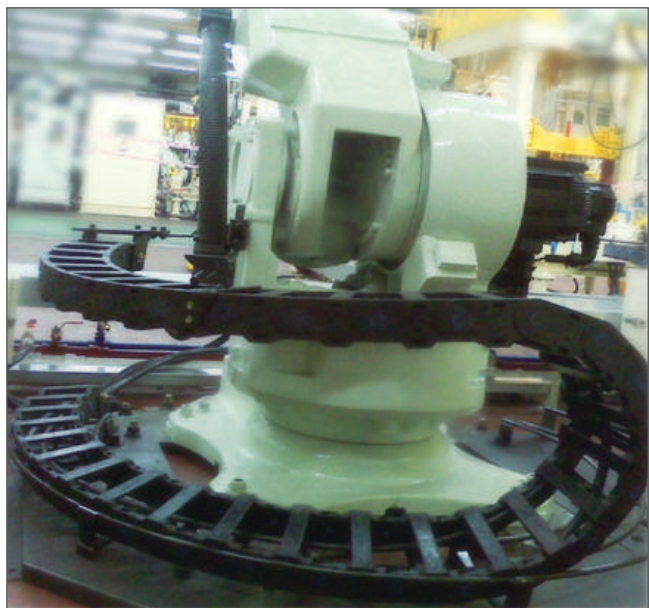
HX3553



■ 적용 예  
 : 로봇, 회전기계

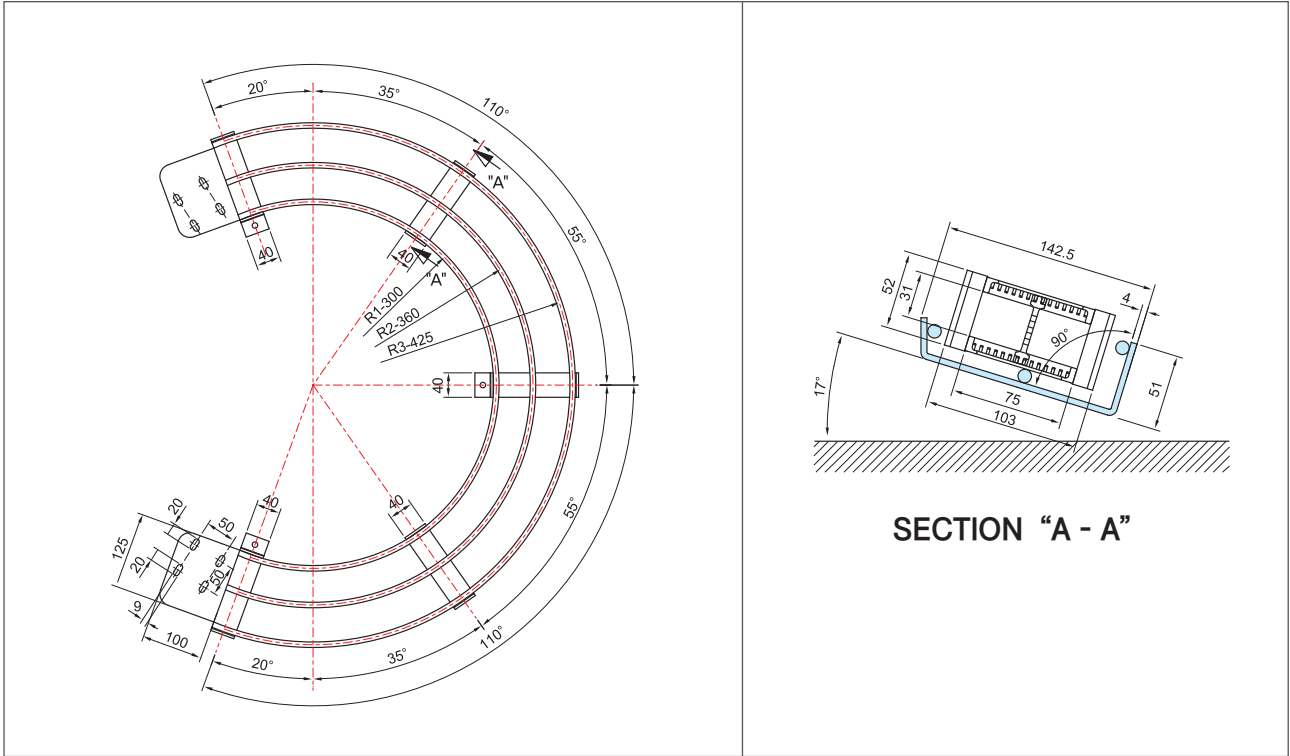
곡률반경 R	
90	140

(단위 : mm)



## HX3553

### 가이드 잔널



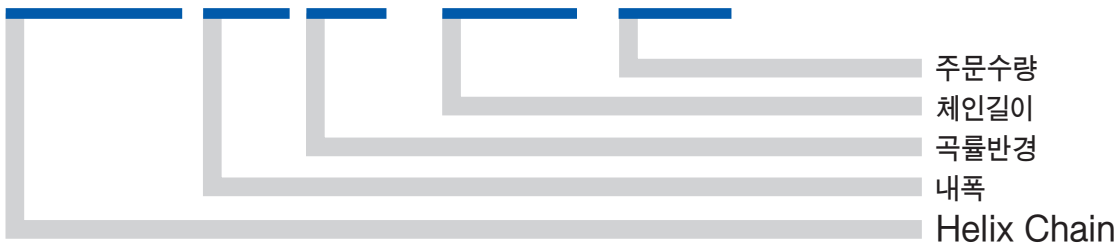
### 필요 링크수 계산

$$N = \left( \frac{\pi \times Or \times B}{360^\circ \times P} \right) + \frac{Lp}{P}$$

- N : 링크 수
- Or : 외각 반경
- B : 회전각도
- P : 체인 피치
- Lp :  $\pi R + 6p$

### 주문방법

**HX3553. 075. R90 - 1000L : 10ST**



- 주문수량
- 체인길이
- 곡률반경
- 내폭
- Helix Chain